

## TECHNICAL DATA SHEET

**Steel flat welded flange Elephant SS304/ SS316/AISI 321  
DN15-300 16/25 bar type 01 row 1 version B**



## 1. GENERAL INFORMATION ABOUT THE PRODUCT

1.1. Steel flat welded flange Elephant SS304/ SS316/AISI 321 DN15-300 16/25 bar type 01 row 1 version B

1.2. Purpose: Flanges are designed to connect fittings to pipelines, connect individual sections of pipelines to each other and to connect pipelines to various equipment.



2. MAIN TECHNICAL DATA AND CHARACTERISTICS

Table 1. Characteristics

|                                       |  |
|---------------------------------------|--|
| Nominal diameter DN, mm               | 15-300   |
| Nominal pressure PN, bar              | 16/25  |
| Working temperature of the medium, °C | from -80 to +600<br>(aggressive environment – up to +350)                              |
| Working medium                        | вода, пар, газ, нефтепродукты  |
| Material                              | stainless steel AISI 304<br>or stainless steel AISI 316<br>or stainless steel AISI 321 |
| Control group                         | IV   |



### 3. WEIGHT AND DIMENSIONAL PARAMETERS

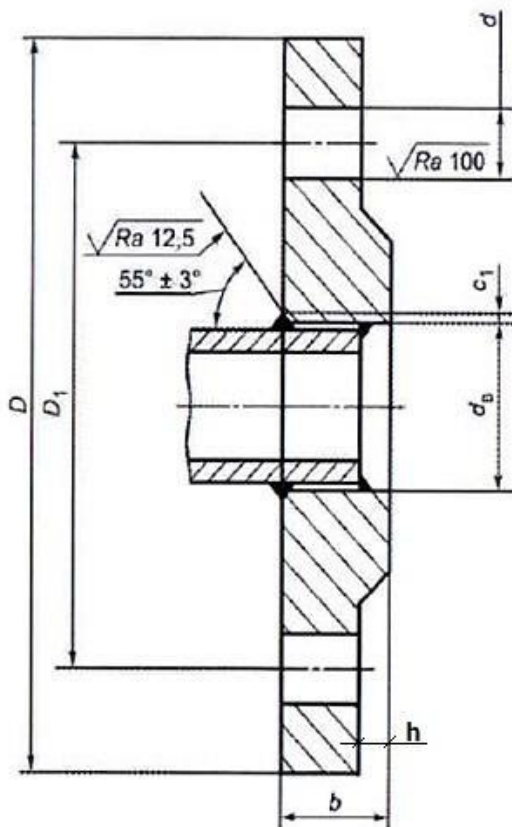


Figure 1 - Dimensions



Table 2. Dimensions and weights for flanges: SS304 Ду15-300 16 bar; SS316 DN15-300 Py16; AISI 321 DN15-300 16 bar.

| DN  | d <sub>B</sub> | b  | c <sub>1</sub> | D   | D <sub>1</sub> | d  | n  | h | Вес,<br>кг |
|-----|----------------|----|----------------|-----|----------------|----|----|---|------------|
| 15  | 19             | 14 | 2              | 95  | 65             | 14 | 4  | 2 | 0,61       |
| 20  | 26             | 16 | 2              | 105 | 75             | 14 | 4  | 2 | 0,86       |
| 25  | 33             | 16 | 3              | 115 | 85             | 14 | 4  | 2 | 1,17       |
| 32  | 39             | 18 | 3              | 140 | 100            | 18 | 4  | 2 | 1,58       |
| 40  | 46             | 18 | 3              | 150 | 110            | 18 | 4  | 3 | 1,96       |
| 50  | 59             | 20 | 3              | 165 | 125            | 18 | 4  | 3 | 2,58       |
| 65  | 78             | 20 | 4              | 185 | 145            | 18 | 4  | 3 | 3,42       |
| 80  | 91             | 20 | 4              | 200 | 160            | 18 | 8  | 3 | 3,71       |
| 100 | 110            | 22 | 4              | 220 | 180            | 18 | 8  | 3 | 4,73       |
| 125 | 135            | 22 | 4              | 250 | 210            | 18 | 8  | 3 | 6,38       |
| 150 | 161            | 24 | 4              | 285 | 240            | 22 | 8  | 3 | 8,2        |
| 200 | 222            | 24 | 4              | 340 | 295            | 22 | 12 | 3 | 10,2       |
| 250 | 273            | 29 | 6              | 405 | 355            | 26 | 12 | 3 | 14,5       |
| 300 | 325            | 32 | 6              | 460 | 410            | 26 | 12 | 4 | 17,8       |

Table 3. Dimensions and weights for flanges AISI 321 DN15-300 25 bar.

| DN  | d <sub>B</sub> | b  | c <sub>1</sub> | D   | D <sub>1</sub> | d  | n  | h | Вес,<br>кг |
|-----|----------------|----|----------------|-----|----------------|----|----|---|------------|
| 15  | 19             | 14 | 2              | 95  | 65             | 14 | 4  | 2 | 0,71       |
| 20  | 26             | 16 | 2              | 105 | 75             | 14 | 4  | 2 | 0,98       |
| 25  | 33             | 16 | 3              | 115 | 85             | 14 | 4  | 2 | 1,17       |
| 32  | 39             | 18 | 3              | 135 | 100            | 18 | 4  | 2 | 1,77       |
| 40  | 46             | 18 | 3              | 150 | 110            | 18 | 4  | 3 | 2,18       |
| 50  | 59             | 20 | 3              | 165 | 125            | 18 | 4  | 3 | 2,8        |
| 65  | 78             | 22 | 4              | 185 | 145            | 18 | 8  | 3 | 3,22       |
| 80  | 91             | 24 | 4              | 200 | 160            | 18 | 8  | 3 | 4,06       |
| 100 | 110            | 26 | 4              | 235 | 190            | 22 | 8  | 3 | 5,92       |
| 125 | 135            | 28 | 4              | 270 | 220            | 26 | 8  | 3 | 8,26       |
| 150 | 161            | 30 | 4              | 300 | 250            | 26 | 8  | 3 | 10,5       |
| 200 | 222            | 32 | 4              | 360 | 310            | 26 | 12 | 3 | 13,3       |
| 250 | 273            | 35 | 6              | 425 | 370            | 30 | 12 | 3 | 18,9       |
| 300 | 325            | 38 | 6              | 485 | 430            | 30 | 16 | 4 | 24         |



## **4. TRANSPORTATION AND STORAGE CONDITIONS**

4.1. When transporting flanges, the packaging must ensure protection of the sealing surfaces and edges for welding, safety and convenience during loading and unloading operations and transportation of flanges.

4.2. Transportation of flanges without packaging is permitted, provided that their safety is ensured, and the sealing surfaces and edges for welding are protected.

4.3. Storage conditions must comply with the established procedures at the enterprise.

## **5. DISPOSAL**

5.1. Disposal of the product (remelting, burial, resale) is carried out in accordance with the requirements established at the enterprise.



## 6. WARRANTY OBLIGATIONS

6.1. Warranty period - 12 months from the date of commissioning, but not more than 18 months from the date of sale.

6.2. The warranty applies to equipment installed and used in accordance with the installation instructions and product specifications described in this data sheet.

6.3. The manufacturer guarantees compliance of the product with safety requirements, provided that the consumer complies with the rules of transport, storage, installation and operation.

6.4. The warranty covers all defects caused by the fault of the manufacturer.

6.5. The warranty does not apply:

- parts and materials of the product subject to wear and tear;
- for cases of damage caused by:
  - modifications to the original design of the product;
  - violation of general installation recommendations;
  - faults caused by improper maintenance and storage; improper operation and use of the equipment.

## 7. WARRANTY TERMS

7.1. Claims to the quality of the goods may be made during the warranty period.

7.2. Defective products are repaired or exchanged for new ones free of charge during the warranty period. ELEPHANT decides whether to replace or repair the product. The replaced product or its parts resulting from the repair shall become the property of 'ELEPHANT'.

7.3. Costs related to dismantling, installation and transport of the defective product during the warranty period shall not be reimbursed to the Buyer.

7.4. If the claim is unfounded, the Buyer shall pay the costs of diagnostics and expertise of the product.

7.5. Products are accepted for warranty repair (as well as for return) fully assembled.



## WARRANTY CARD № \_\_\_\_\_

| № | Product Name | Packs |
|---|--------------|-------|
|   |              |       |
|   |              |       |
|   |              |       |

Name and address of the trading organisation

---

Date of sale \_\_\_\_\_ Seller's signature \_\_\_\_\_

Stamp or seal of the trading organisation

Acceptance stamp

I agree with the terms and conditions of the warranty:

Buyer \_\_\_\_\_ (signature)

Warranty period - 12 months from the date of commissioning, but not more than 18 months from the date of sale.

For warranty repairs, complaints and product quality claims, please contact ELEPHANT at: Carrer d'Aragó,264,3-1,08007 Barcelona, Spain. E-mail address: sales@valveelephant.com.

When making a complaint about the quality of goods, the buyer shall present the following documents:

1. A free-form application, which shall specify:

- name of the organisation or full name of the buyer, actual address, contact telephone numbers;
- name and address of the organisation that carried out the installation;
- basic parameters of the system in which the product was used;
- a brief description of the defect.

2. Document confirming the purchase of the product (delivery note, receipt)..

3. Act of hydraulic test of the system in which the product was installed.

4. This completed warranty card.

A note on the return or exchange of goods \_\_\_\_\_

Date: « \_\_\_\_ » \_\_\_\_\_ 202\_\_yr. Caption \_\_\_\_\_

