



Manufacturer of shut-off and control valves

## TECHNICAL DATA SHEET

**Air treatment unit  
(filter-moisture separator,  
pressure regulator, lubricator)  
AFC2000 ELEPHANT**



+34 900 433 073, [sales@valveelephant.com](mailto:sales@valveelephant.com)  
Carrer d'Aragó, 264, 3-1, 08007 Barcelona, Spain

## 1. GENERAL PRODUCT INFORMATION

1.1. Product name: Air treatment unit (filter-moisture separator, pressure regulator, lubricator) AFC2000 ELEPHANT.

1.2. Purpose: The air treatment unit is designed to clean compressed air from moisture droplets and solid particles, remove condensate, automatically maintain the pressure at the set level, supply lubricant from the tank in the compressed air flow to the elements of the pneumatic system.

1.3. Operating principle: The moisture separator filter is used to clean the compressed air and drain condensate. The air pressure regulator (reducer) is required to adjust the compressed air pressure to the required level. The lubricator (oil sprayer) adds oil with a viscosity of  $32 \text{ mm}^2/\text{s}$  ( $=\text{cSt}$ ) at  $40^\circ\text{C}$  to the pneumatic system for further lubrication of the control components - pneumatic cylinders and pneumatic valves.



## 2. BASIC TECHNICAL DATA AND CHARACTERISTICS

Table 1

Parameter	Value
Operating Pressure (bar)	8
Maximum Pressure (bar)	10
Adjustable Pressure Range (bar)	0.5 ÷ 9
Burst Pressure (bar)	15
Air Connection	1/4"
Operating Temperature (°C)	-5 to +60
Filtered Particle Size (µm)	40
Oil Viscosity	ISO VG 32



### 3. DIMENSIONAL CHARACTERISTICS

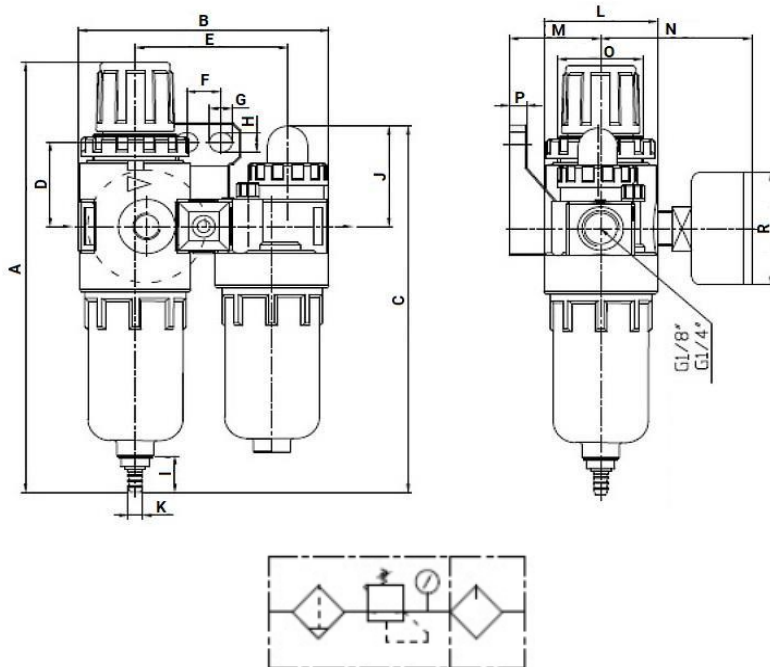


Table 2

A	B	C	D	E	F	G	H	I	J	K	L	M	N	O	P	R
mm																
16	8	13	3	53,	1	8	7	13,	3	5	4	32	53	29	6	41,
2	8	9	1	5	2			3	9		0					5



#### **4. TRANSPORT AND STORAGE CONDITIONS**

4.1. Air treatment units should be transported and stored in a way that prevents possible mechanical damage to the product, as well as avoiding strong vibration and significant temperature differences.

#### **5. UTILISATION**

7.1. The product is disposed of in accordance with the procedure established at the enterprise (remelting, burial, resale).



## 6. WARRANTY OBLIGATIONS

6.1. Warranty period - 12 months from the date of commissioning, but not more than 18 months from the date of sale.

6.2. The warranty applies to equipment installed and used in accordance with the installation instructions and product specifications described in this data sheet.

6.3. The manufacturer guarantees compliance of the product with safety requirements, provided that the consumer complies with the rules of transport, storage, installation and operation.

6.4. The warranty covers all defects caused by the fault of the manufacturer.

6.5. The warranty does not apply:

- parts and materials of the product subject to wear and tear;
- for cases of damage caused by:
  - modifications to the original design of the product;
  - violation of general installation recommendations;
  - faults caused by improper maintenance and storage; improper operation and use of the equipment.

## 7. WARRANTY TERMS

7.1. Claims to the quality of the goods may be made during the warranty period.

7.2. Defective products are repaired or exchanged for new ones free of charge during the warranty period. ELEPHANT decides whether to replace or repair the product. The replaced product or its parts resulting from the repair shall become the property of "ELEPHANT".

7.3. Costs related to dismantling, installation and transport of the defective product during the warranty period shall not be reimbursed to the Buyer.

7.4. If the claim is unfounded, the Buyer shall pay the costs of diagnostics and expertise of the product.

7.5. Products are accepted for warranty repair (as well as for return) fully assembled.



**WARRANTY CARD № \_\_\_\_\_**

№	Product Name	Packs

Name and address of the trading organisation \_\_\_\_\_

Date of Sale \_\_\_\_\_ Seller's signature \_\_\_\_\_

Stamp or seal of the trading organisation

Acceptance stamp

I agree with the terms and conditions of the warranty:

Buyer \_\_\_\_\_ (signature)

Warranty period - 12 months from the date of commissioning, but not more than 18 months from the date of sale.

For warranty repairs, complaints and product quality claims, please contact ELEPHANT at: Carrer d'Aragó,264,3-1,08007 Barcelona, Spain\_E-mail address: [sales@valveelephant.com](mailto:sales@valveelephant.com).

When making a complaint about the quality of goods, the buyer shall present the following documents:

1. A free-form application, which shall specify:

- name of the organisation or full name of the buyer, actual address, contact telephone numbers;
- name and address of the organisation that carried out the installation;
- basic parameters of the system in which the product was used;
- a brief description of the defect.

2. Document confirming the purchase of the product (delivery note, receipt).

3. Act of hydraulic test of the system in which the product was installed.

4. This completed warranty card.

A note on the return or exchange of goods \_\_\_\_\_

Date: «    » \_\_\_\_\_ 202\_ \_г.      Caption \_\_\_\_\_

